

As Time Goes By



ARPANET GEOGRAPHIC MAP, OCTOBER 1980

Legend:

- Wavy line: SATELLITE CIRCUIT
- : IMP
- : TIP
- △: PLURIBUS IMP
- ◇: PLURIBUS TIP
- : C30

(NOTE: THIS MAP DOES NOT SHOW ARPA'S EXPERIMENTAL SATELLITE CONNECTIONS)
NAMES SHOWN ARE IMP NAMES, NOT (NECESSARILY) HOST NAMES

ole@sri-ka

ARPANET GEOGRAPHIC MAP, OCTOBER 1980

Legend:

- Wavy line: SATELLITE CIRCUIT
- : IMP
- : TIP
- △: PLURIBUS IMP
- ◇: PLURIBUS TIP
- : C30

(NOTE: THIS MAP DOES NOT SHOW ARPA'S EXPERIMENTAL SATELLITE CONNECTIONS)
NAMES SHOWN ARE IMP NAMES, NOT (NECESSARILY) HOST NAMES

ole@sri-ka

ARPANET GEOGRAPHIC MAP, OCTOBER 1980

Legend:

- ~ SATELLITE CIRCUIT
- IMP
- TIP
- △ PLURIBUS IMP
- ◇ PLURIBUS TIP
- C30

(NOTE: THIS MAP DOES NOT SHOW ARPA'S EXPERIMENTAL SATELLITE CONNECTIONS)
NAMES SHOWN ARE IMP NAMES, NOT (NECESSARILY) HOST NAMES

ole@sri-ka

When I was young...



Inside...



The Early Days of Radio

- ◆ Invented around 1890 [wire replacement]
- ◆ Public introduction around 1920
- ◆ Portrayed as “entertainment”
- ◆ Quickly became important:
news, wars, politics





Guglielmo Marconi (1874–1937)

June
1922

Radio Enters the Home

Robert

How to enjoy popular
Radio Broadcasting
Complete instructions and
description of apparatus



For those who desire to be entertained
with concerts, lectures, dance music –
as well as for the Radio amateur

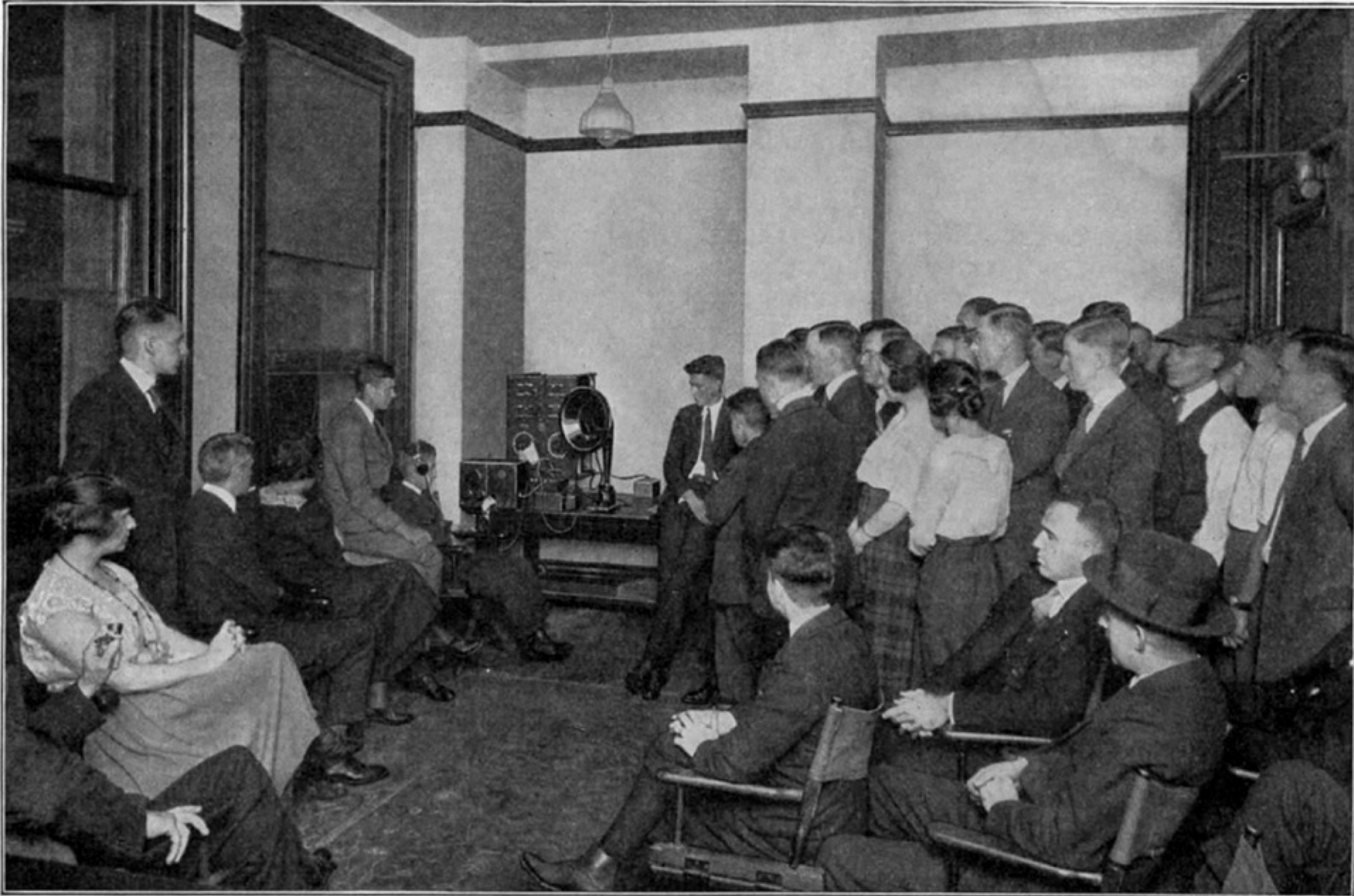
Radio **Corporation**
of America

SALES DEPARTMENT
WOOLWORTH BUILDING NEW YORK

WHAT EVERYONE OUGHT TO KNOW ABOUT BROADCASTING



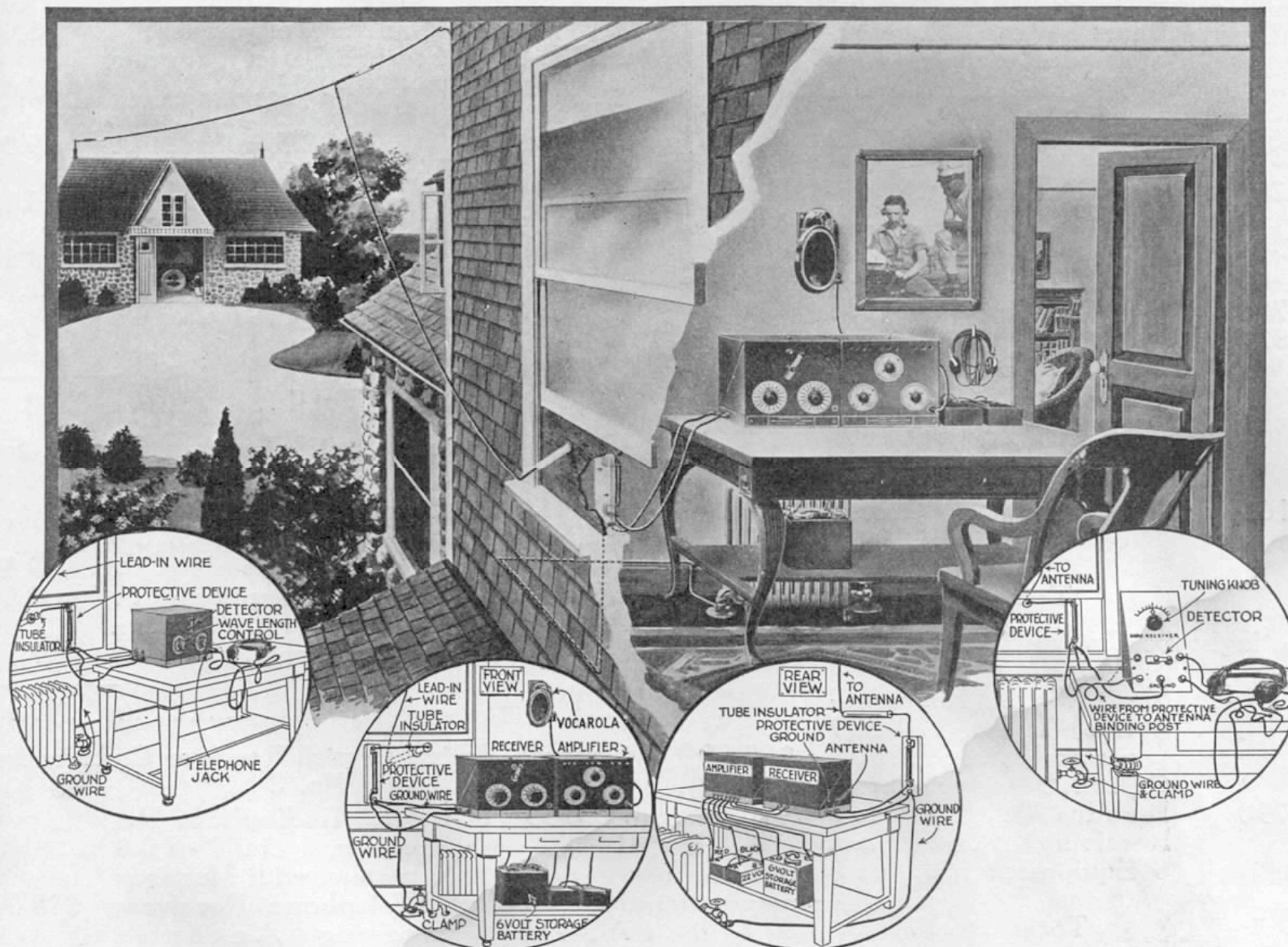
The American Boy has taken to Radio with an enthusiasm probably greater than any other subject of the day.



The Radio Concert becomes a reality by the use of a combination receiver-amplifier unit in conjunction with a loud speaker.

RADIO CORPORATION OF AMERICA

COMPLETE RADIO TELEPHONE RECEIVER SETS



Illustrating the general set up of receiver combinations. The extreme left hand cut show GE Receiver AR-1300 as a crystal receiver, the next cut shows GE Receiver AR-1300 in combination with Amplifier AA-1400, the next cut shows the method of battery connection when using these two units. The extreme right hand cut shows GE Crystal Receiver AR-753 in operating position.

Oslo, September 1941



[illegible]

But Eventually...



A smart radio



Combining information...

World Clock
22:19
Zagreb

**3,000 frequency
Database
ROM**

**One-touch
Tuner**

The Mobile Phone

- ◆ Became a reality around 1984
- ◆ Evolved from Car Phones
- ◆ Initial adoption slow
- ◆ Initial systems analog

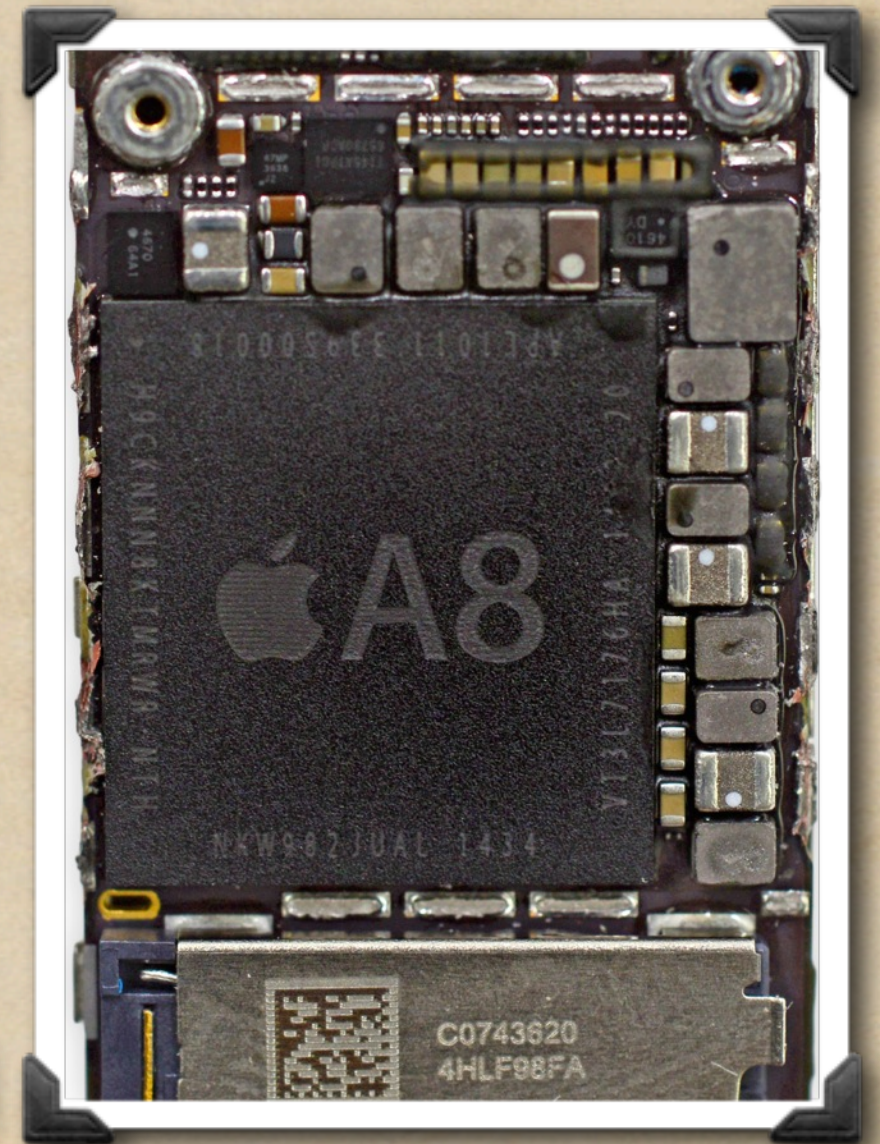


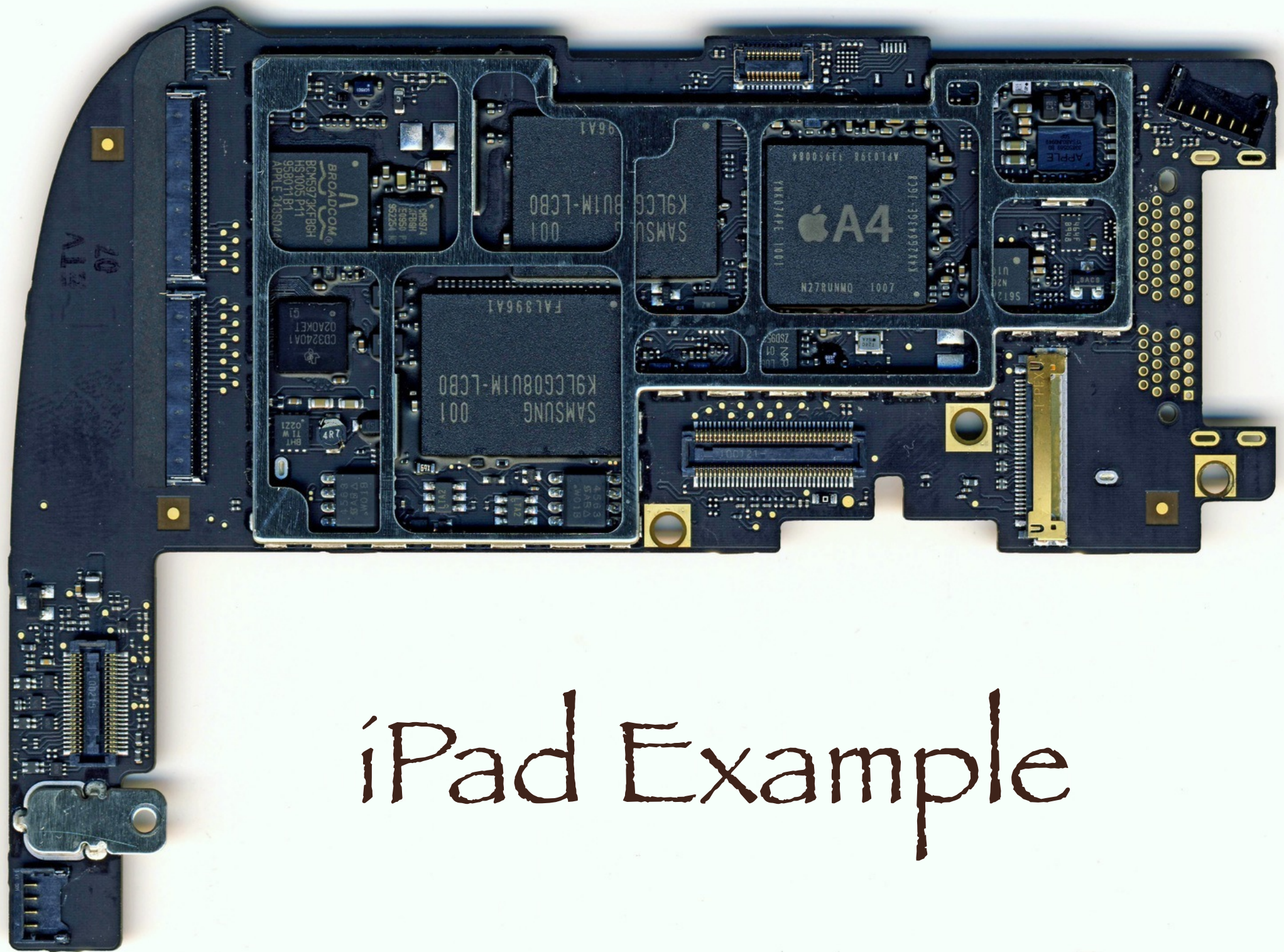
The iPhone 6

- ◆ A8 SoC: 2,000,000,000 transistors
- ◆ HD Display/Touch Entry
- ◆ Sens: Barometer, Motion, Gyroscope, Accelerometer, Proximity, Fingerprint
- ◆ Two cameras, light sensor, compass
- ◆ Radios: WiFi, Bluetooth, Cell, GPS

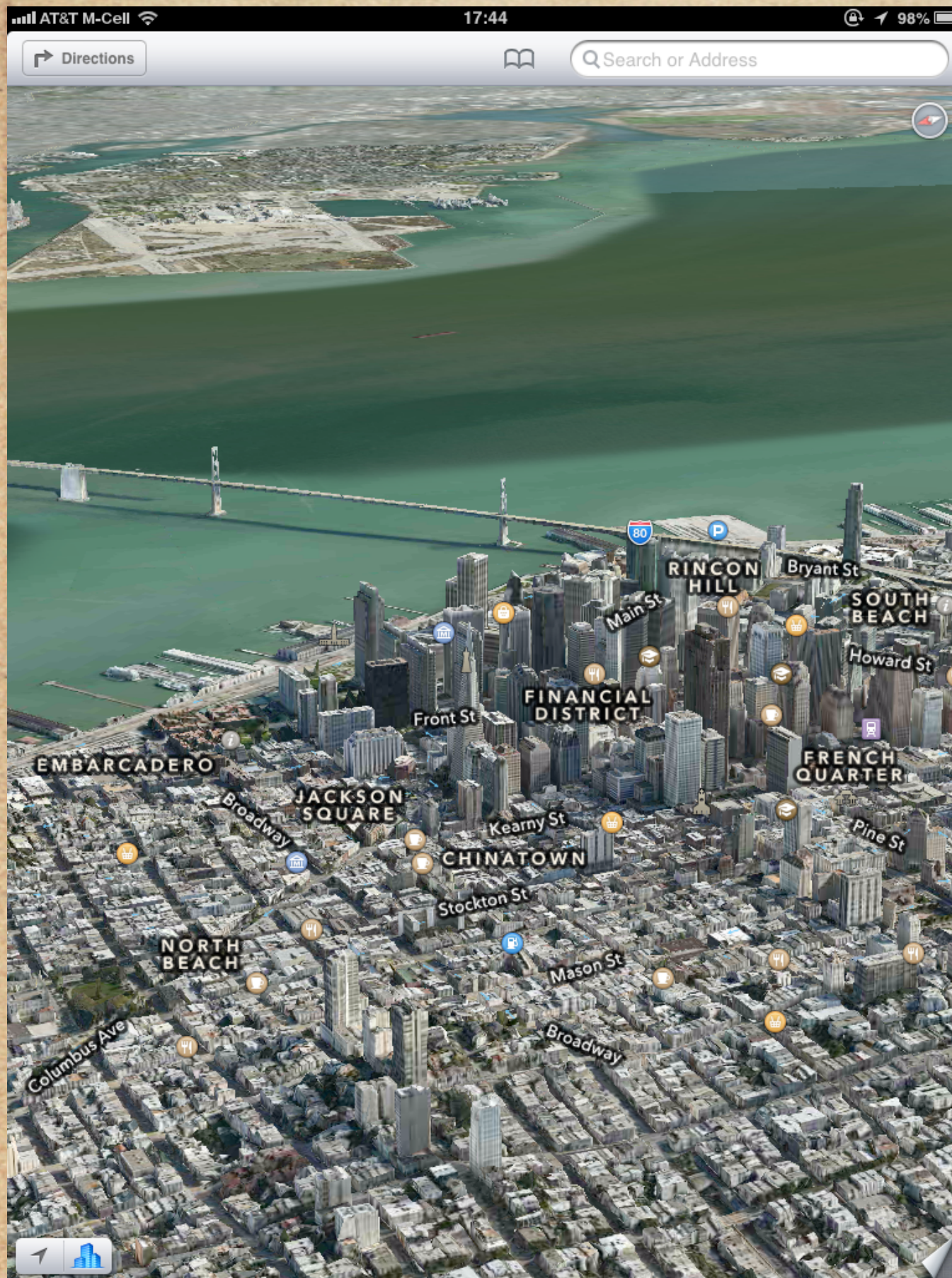


Inside...





iPad Example



Maps:

- ◆ GPS Location
- ◆ Business Listings
- ◆ Directions
- ◆ Street View images
- ◆ Satellite Images
- ◆ 3D modelling

What can we Learn from Technology History ?



- ◆ One basic invention often leads to another (Radio → TV for example)
- ◆ Initial idea for use is often “wrong”
- ◆ Usage is difficult to predict
- ◆ Major inventions cause SOCIAL changes

Social Changes



- ◆ Conferences and meetings no longer have “terminal rooms”
- ◆ Real-time online discussion in meetings
- ◆ People not paying attention ?
- ◆ Mobile Internet (3G/4G/LTE)

Impacts on our Lives



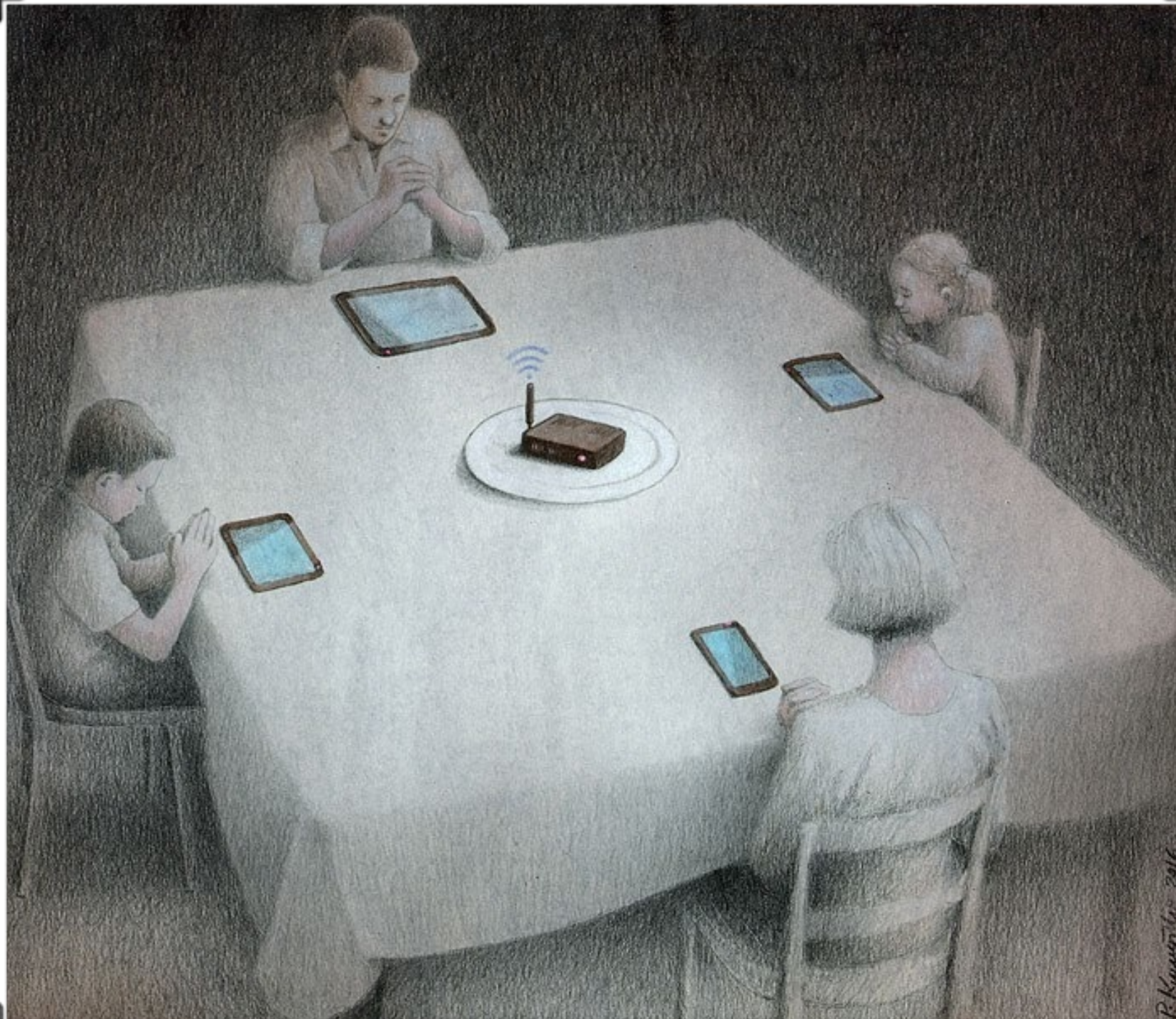
+ A 212 Jun 14 Kotaro Kataoka	(5007) Re: WIDE Camp in the fall
+ 213 Jun 14 Rodney Van Meter	(6887) Re: WIDE Camp in the fall
+ 214 Jun 16 Rodney Van Meter	(5741) invitation
+ 215 Jun 16 Rodney Van Meter	(5654) Re: invitation
+ 216 Jun 17 Rodney Van Meter	(4117) Re: invitation
217 Jun 16 To: Rodney Van Meter	(5716) Re: invitation
218 Jun 16 To: Rodney Van Meter	(6059) Re: invitation
+ A 219 Jun 18 Rodney Van Meter	(2636) PayPal?
220 Jun 28 Toshiaki Hatano	(8414) [wide 45639] [ISO-2022-JP] 20103???? ?/?/ Cal
221 Jul 2 Jun Murai	(3916) [wide 45654] [ISO-2022-JP] ?p??#?量
+ A 222 Jul 15 Kotaro Kataoka	(119K) Van-san and Lert-san, the staffs supporting us for the
+ 223 Jul 16 Rodney Van Meter	(3193) Re: Tom Vest
224 Jul 24 Kotaro Kataoka	(4890) [wide 45690] Announcement of Registration for WIDE Cam
+ 225 Jul 23 wide-camp@e-side.co.jp	(4542) WIDE Camp Registration completed
226 Jul 23 To: Kotaro Kataoka	(1323) Registration comments
227 Jul 23 To: Scott MacDonald	(1758) Registration comments (fwd)
+ 228 Jul 26 scott	(3866) Re: Registration comments (fwd)
229 Jul 26 Shinichiro Yoshioka	(3095) [wide 45692] Announcement of Web page for WIDE Camp 20
+ A 230 Jul 27 Kotaro Kataoka	(3754) Re: Registration comments
231 Jul 27 Kotaro Kataoka	(3775) [wide 45695] PayPal for WIDE Camp / [ISO-2022-JP] WIDE
+ 232 Jul 27 wide-camp Registration Cent	(6221) Re: WIDE Camp Registration completed
233 Jul 27 Hironori Kawaguchi	(8464) [wide 45697] [ISO-2022-JP] 201039??WIDE??? ???%6?

- ◆ Are we too connected?
- ◆ Are your connections secure?
- ◆ How would you know?
- ◆ The network knows where you are !

Current Trends?



Modern Family?



Failures: Internet Security



Misdirected Failure



Please let me Click!



Thank You!

- ♦ ole@protocoljournal.org
- ♦ www.protocoljournal.org

