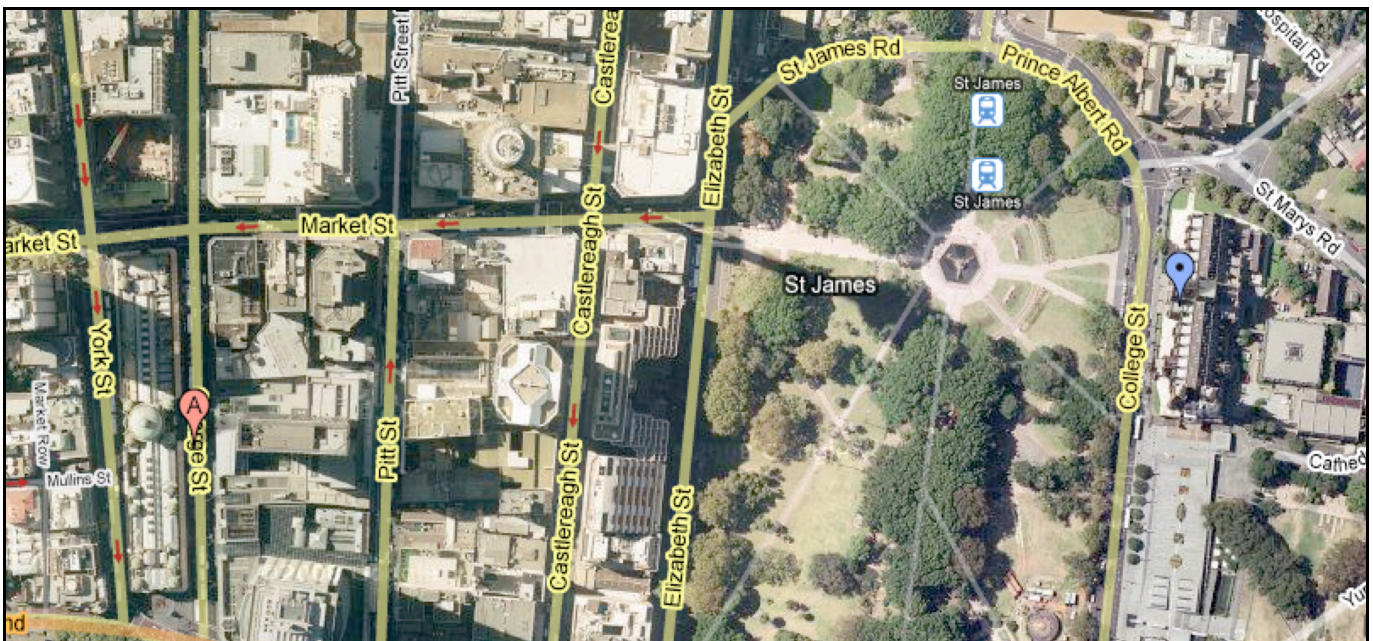




St. Anne's at St. Mary's

Saturday, June 27,
2009
@ 19:15

A Special Event for
The ICANN Nomcom
and
Friends
at
St. Mary's Cathedral
Sydney



(A) Hilton
488 George St.

Hyde Park

Cathedral
(Blue Marker)

Directions from the Hilton:

- Walk up to Market Street (to your right).
- Turn right at Market Street and walk to Elizabeth Street.
- Cross Elizabeth Street and Hyde Park to College Street.
- Cathedral is directly in front of you.



Contact: ole@organdemo.info

West Organ, St. Mary's Cathedral, Sydney

Orgues Létourneau Ltée, Opus 64, 1999

Great II (85mm wind)

Bourdon (metal)	16'
Open Diapason	8'
Harmonic Flute	8'
Chimney Flute	8'
Violoncello	8'
Principal	4'
Wald Flute	4'
Twelfth	2 ² / ₃ '
Fifteenth	2'
Mixture	IV
Sharp Mixture	III
Trumpet	8'
Tremulant	

Choir I (Expressive) (85mm wind)

Salicional	8'
Stopped diapason (wood)	8'
Principal	4'
Koppel Flute	4'
Nazard	2 ² / ₃ '
Block Flute	2'
Tierce	1 ³ / ₅ '
Larigot	1 ¹ / ₃ '
Mixture	IV
Clarinet	8'
Tuba	8' (unenclosed 355mm wind)
Tremulant	

Swell III (Expressive) (95mm wind)

Bourdon (wood)	16'
Open Diapason	8'
Stopped Diapason (metal)	8'
Viole de Gambe	8'
Voix Céleste	8'
Principal	4'
Nacht Horn	4'
Fifteenth	2'
Mixture	V
Double Trumpet	16'
Cornoepen	8'
Oboe	8'
Clarion	4'
Tremulant	

Pedal (100mm wind)

Contra Bourdon	32'
Open Diapason	16'
Bourdon	16'
Principal	8'
Bass Flute	8'
Choral Bass	4'
Mixture	III
Trombone	16'
Trumpet	8'
Clarion	4'



Compass: Manuals 61 notes
Pedal 32 notes

Couplers: Swell to Great
Choir to Great
Swell to Choir
Choir to Pedal
Swell to Pedal
Great to Pedal

Total number of pipes: 3,327
Mechanical key action (main console)
Electric key action (mobile console)
Electric stop action
256 memories for general pistons
Sequencer
Programmable crescendo pedal
Transposer